



optics bench with accessories

DL150-1A Optics bench, L=1000 mm

Special aluminium profile with a cm and mm scale; two clamping screws on the side for fastening it to rail bases DL150-25, using clamp saddles DS102-1R, or for extending it using rail connector DS101-1V or pivoting arm with degree scale DL150-2A; length: 1000 mm

DS101-50 Universal stand rail, L=500 mm

Used for extending the optics bench; designed like DL150-1A, but without scale; length: 500 mm

DS101-1V Rail connector, demo

Special aluminium profile for extending the optics bench and firmly connecting it to NTL universal rails such as DS101-50

DS102-1R Clamp saddle

Special aluminium profile for fastening the optics bench to adjustable rail bases DL150-25 (one clamp saddle is required for each rail base); Length: 42 mm

DL150-25 Rail base, adjustable

Special aluminium profile with two adjustment screws for fastening and levelling optics bench DL150-1A with the aid of clamp saddles DS 102-1R (one clamp saddle is required for each rail base); length: 250 mm

Sliding saddles for optics bench

Special aluminium profile with a clamp socket; may be mounted on and fixed to optics bench DL150-1A und DS101-50; clamp socket has a lengthwise and a through hole along with a set screw for clamping in rods up to 10 mm in diameter; a gauging mark on the slider allows it to be positioned exactly along the optics bench

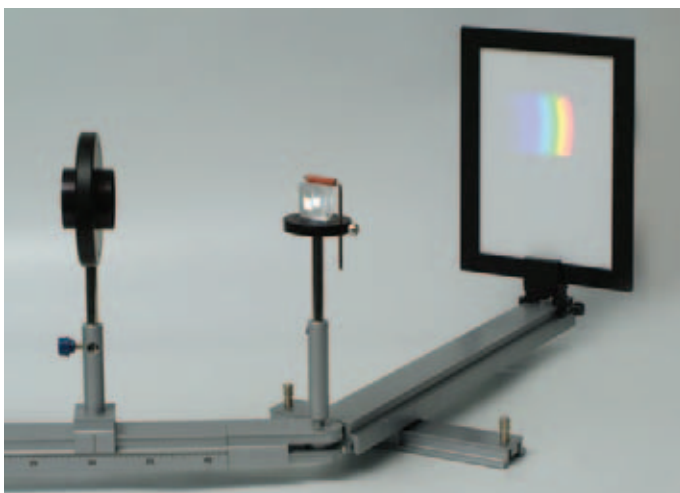
DL150-04 Sliding saddle for optics bench; socket height: 40 mm

DL150-08 Sliding saddle for optics bench

Socket height: 80 mm

DL150-2A Pivoting arm with degree scale

The pivoting arm with degree scale allows optics bench DL150-1A to be coupled with universal rail DS101-50 when doing optics experiments calling for light rays to travel at an angle; pivoting joint with a 180 ° scale including a clamp socket on the pivot axis for receiving optics components on supports with a diameter of up to 10 mm; Total length: 225 mm

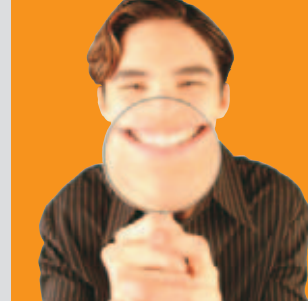


Use: Pivoting arm with degrees scale used in demonstrating colour dispersion of light by a prism



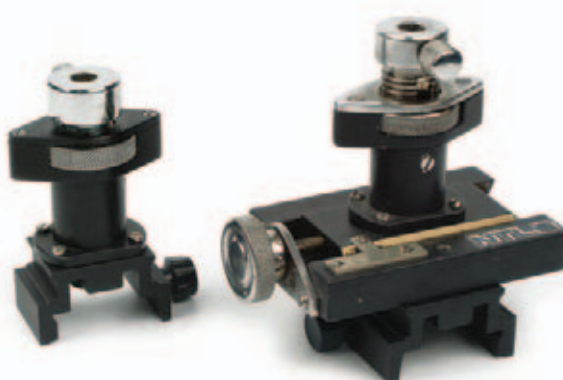
Use: Standard assembly of the optics bench showing how the adjustable rail base, the clamp saddle and the slider for the optics bench (H=80 mm) are assembled

optics bench with accessories



DL150-5A Pivoting clamp

For mounting optical apparatus and components outside of the optical axis; square aluminium rod with three holes and two knurled-head screws, suitable for supports of up to 10 mm in diameter
Dimensions: 80x20x20 mm

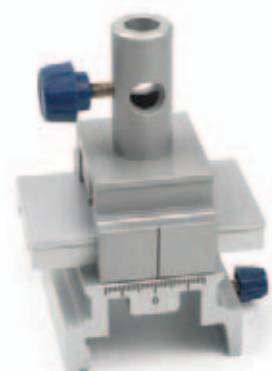


DL300-1B Sliding saddle, height adjustable

For use on optics bench DL150-1A; the height of the clamp socket, for holding apparatus with supports of up to 10 mm in diameter, is adjustable; range of height adjustment: approx. 30 mm

DL300-1A Sliding saddle

For use on optics bench DL150-1A; the clamp socket, the height of which is adjustable, holds apparatus with supports of up to 10 mm in diameter and is mounted on a laterally adjustable slider, making it possible to shift the clamp socket at right angles to the optical axis; adjustment range: +/-10 mm; range of height adjustment: approx. 30 mm



DL150-4A Sliding saddle, laterally adjustable

Special aluminium profile with rail adapter; simple sliding saddle with mm scale for slidable adjustment, at right angles to the optical axis, of sliding saddles used on optics bench DL150-04(ff) approx. 30 mm

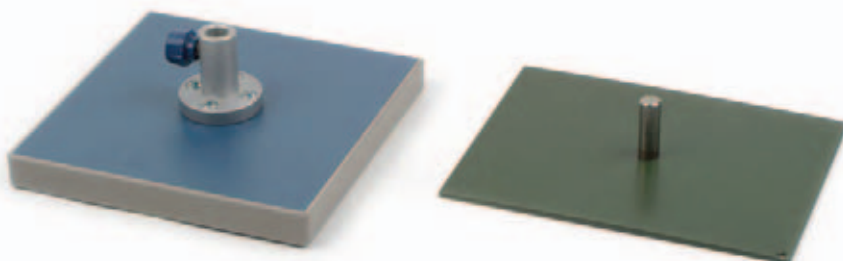


DS404-1M Plate clamp on support

Special aluminium profile on support; with clamping jaws and wing screw for clamping in plates with a maximum thickness of 10 mm; Support length: 40 mm; diameter: 10 mm

DS140-2R Square slider, horizontal

Special aluminium profile with a clamp for holding round rods of up to 18 mm in diameter, square rods up to 12x12 mm and plates up to 16 mm thick; includes a set screw and wing screw; L=35 mm

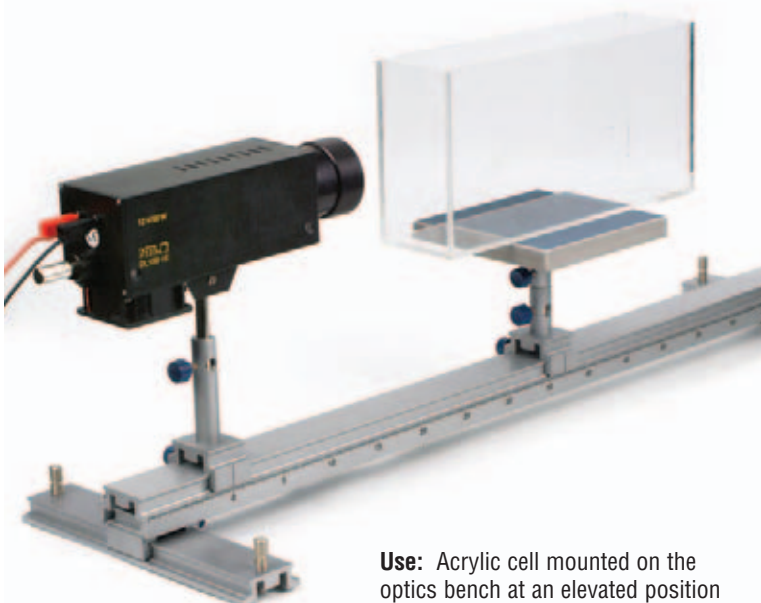


DS603-19 Platform on clamp socket, small

For mounting apparatus in an elevated position; panel with a blue plastic surface and plastic edging; clamp socket, mounted permanently on the platform, with a set screw takes rods up to 10 mm in diameter
Dimensions: 150x150x16 mm

DS103-1T Platform on support, small

Metal, green powder-coated panel on a support (D=10 mm, L=35 mm)
Platform dimensions: 160x120 mm



Use: Acrylic cell mounted on the optics bench at an elevated position



DL512-1R Prism table, demo

For mounting prisms on the optics bench; plastic plate on a support with a clamp of adjustable height; diameter: 60 mm; max. clamp opening: 60 mm; Support length: 150 mm